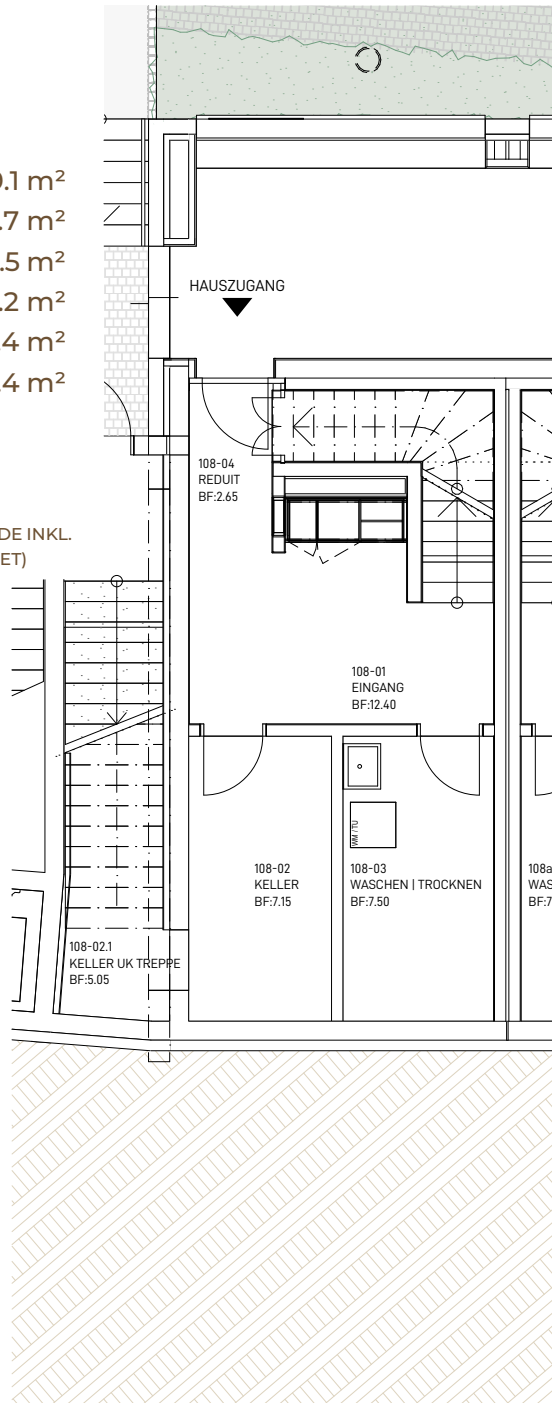


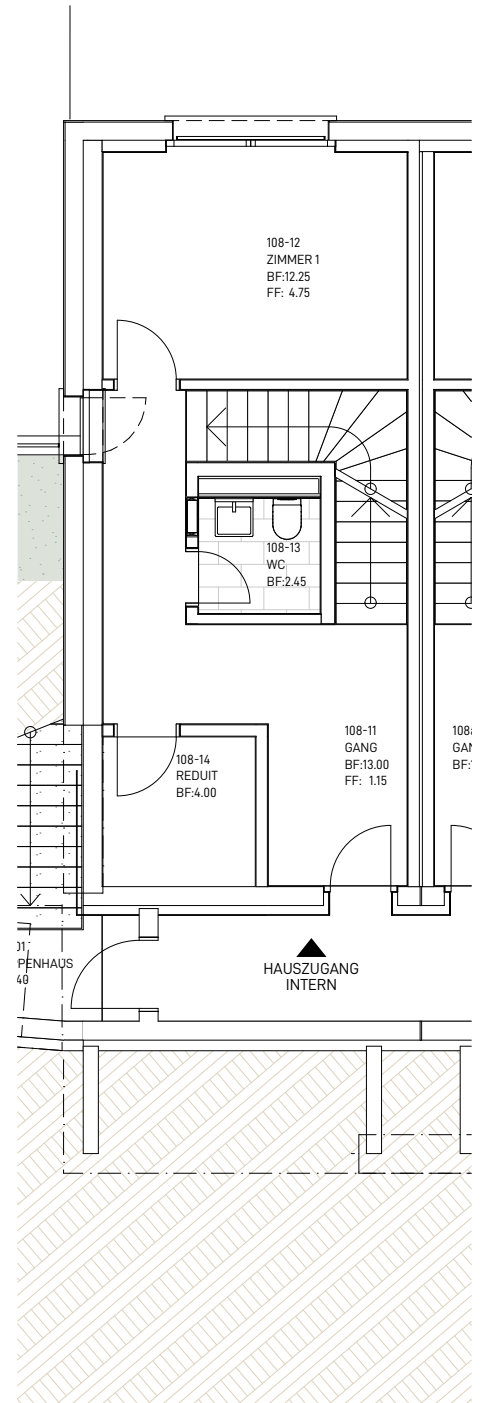
REIHENHAUS | 4½
 ST.GEORGENSTRASSE 108
 9011 ST.GALLEN

BWF: 149.1 m²
 REDUIT: 6.7 m²
 WASCHEN: 7.5 m²
 KELLER: 12.2 m²
 BALKON: 2.4 m²
 SITZPLATZ: 25.4 m²

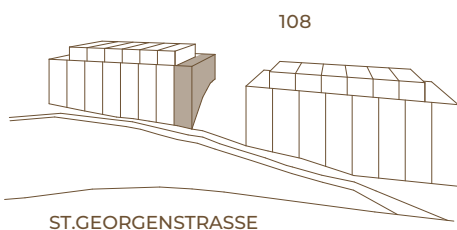
BWF = (FLÄCHE INNERKANT AUSSENWÄNDE INKL. INNENWÄNDE UND STEIGZONEN GERECHNET)



SOCKELGESCHOSS



ERDGESCHOSS

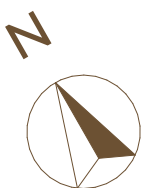


KONTAKTDATEN:

Telamon AG
 9000 St. Gallen

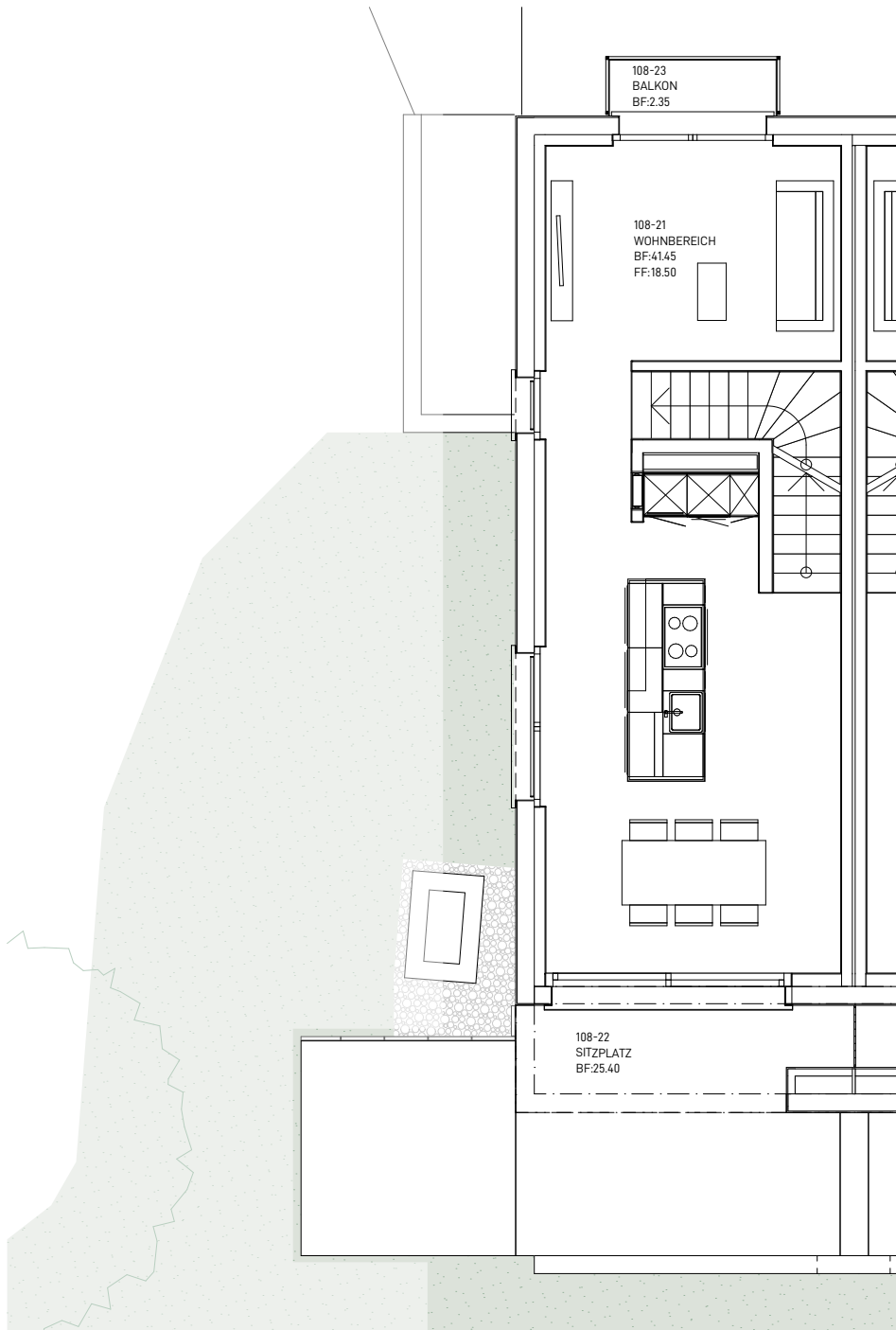
T +41 71 552 25 61
 kontakt@stgeorgen106.ch
 www.stgeorgen106.ch

21.07.2023

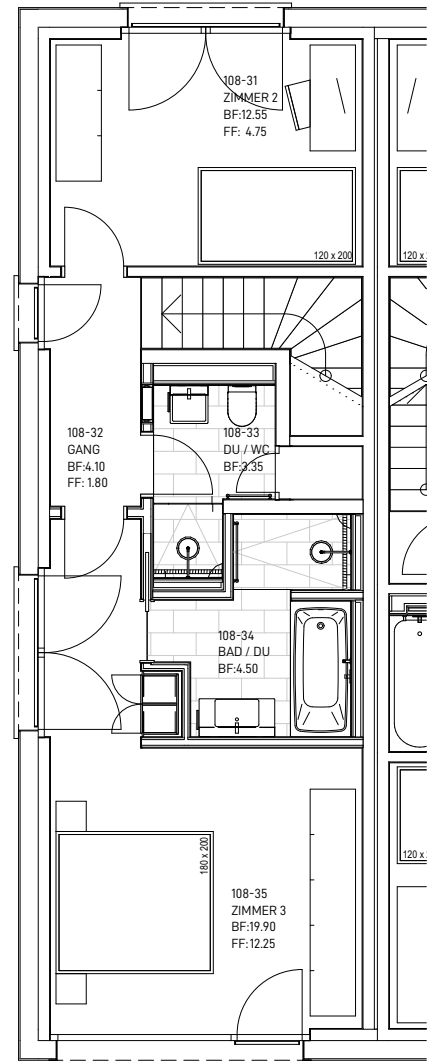


MASSSTAB 1:100 (1cm = 1m)

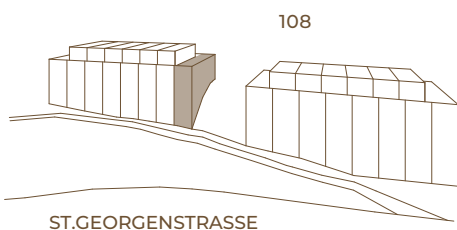
5m



1.OBERGESCHOSS



2.OBERGESCHOSS

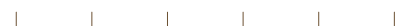


KONTAKTDATEN:

Telamon AG
9000 St. Gallen

T +41 71 552 25 61
kontakt@stgeorgen106.ch
www.stgeorgen106.ch

21.07.2023



MASSSTAB 1:100 (1cm = 1m)

5m