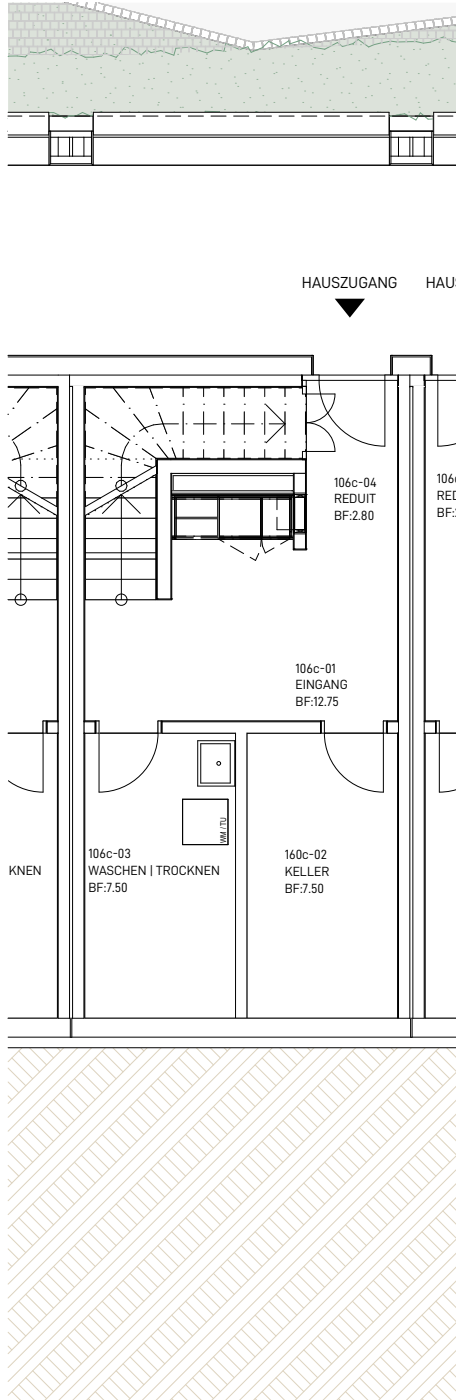


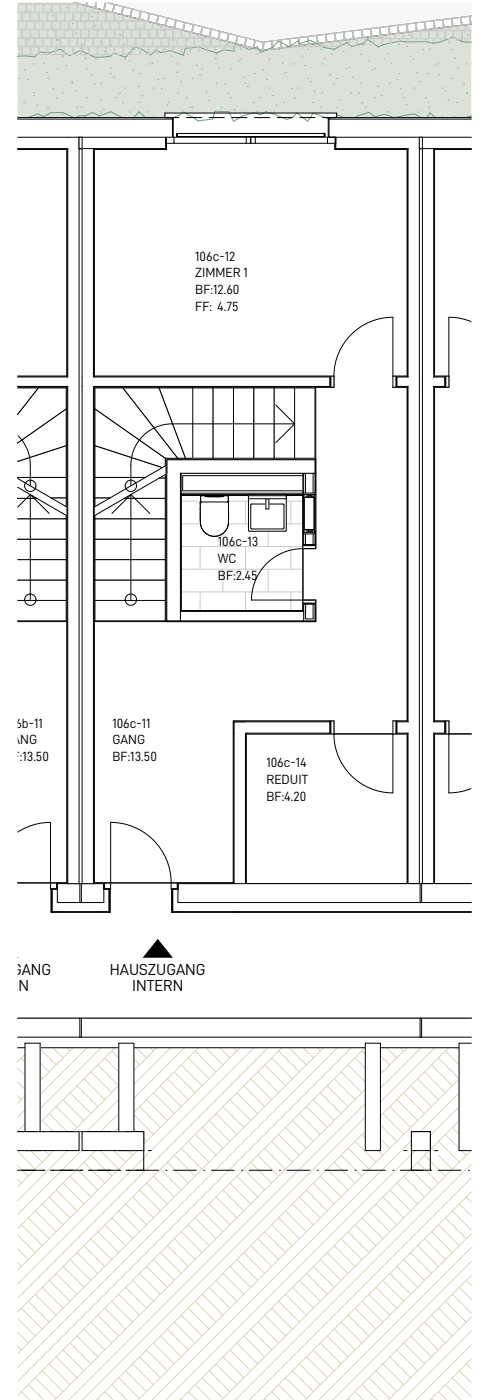
REIHENHAUS | 5½
ST.GEORGENSTRASSE 106c
9011 ST.GALLEN

BWF: 188.6 m²
 REDUIT: 7.0 m²
 WASCHEN: 7.5 m²
 KELLER: 7.5 m²
 BALKON: 2.4 m²
 SITZPLATZ: 14.9 m²
 TERRASSE: 12.3 m²

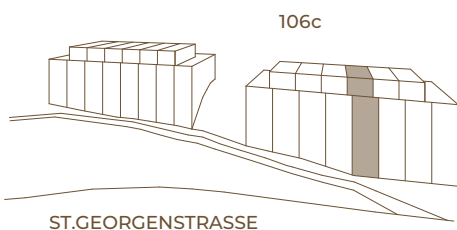
BWF = (FLÄCHE INNERKANT AUSSENWÄNDE INKL. INNENWÄNDE UND STEIGZONEN GERECHNET)



SOCKELGESCHOSS



ERDGESCHOSS

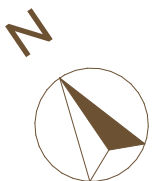


KONTAKTDATEN:

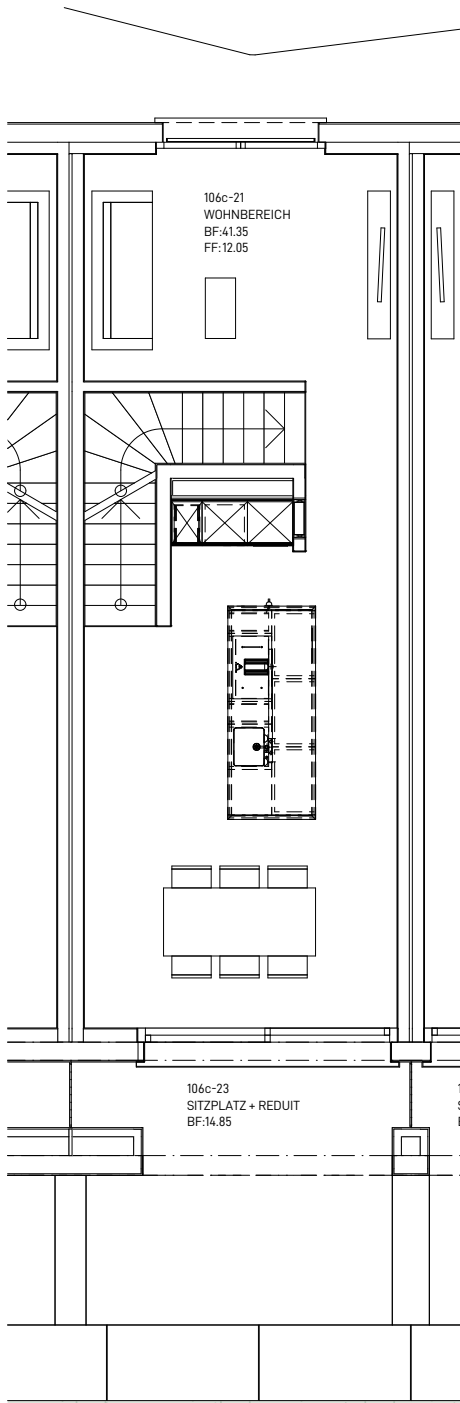
Telamon AG
9000 St. Gallen

T +41 71 552 25 61
kontakt@stgeorgen106.ch
www.stgeorgen106.ch

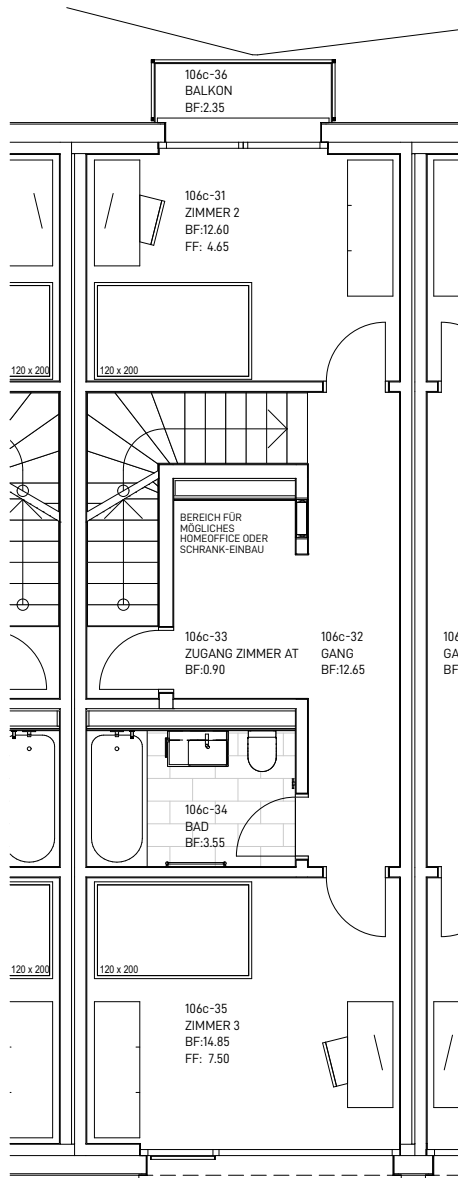
18.07.2023



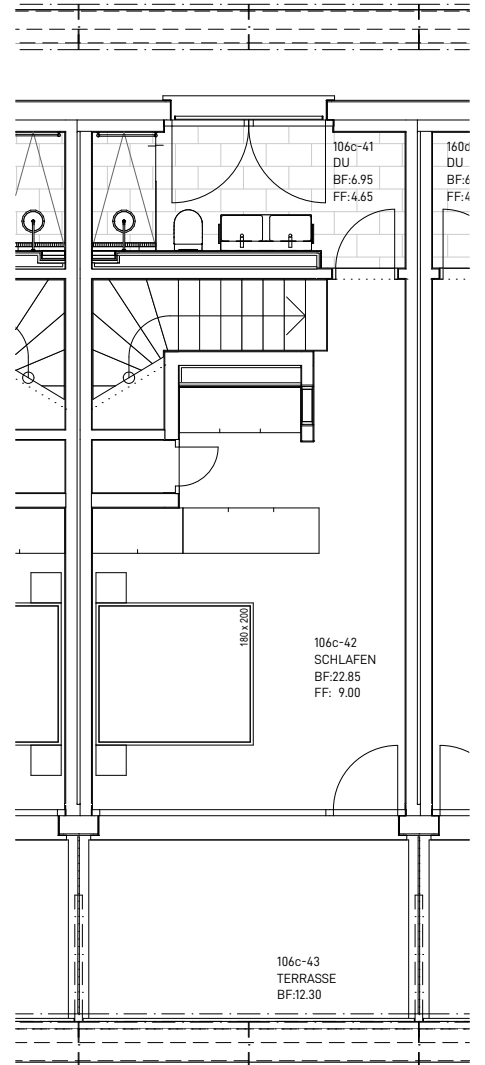
MASSSTAB 1:100 (1cm = 1m) 5m



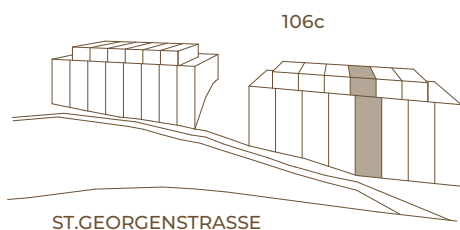
1. OBERGESCHOSS



2. OBERGESCHOSS



ATTIKAGESCHOSS

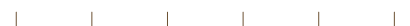


KONTAKTDATEN:

Telamon AG
9000 St. Gallen

T +41 71 552 25 61
kontakt@stgeorgen106.ch
www.stgeorgen106.ch

18.07.2023



MASSSTAB 1:100 (1cm = 1m)

5m