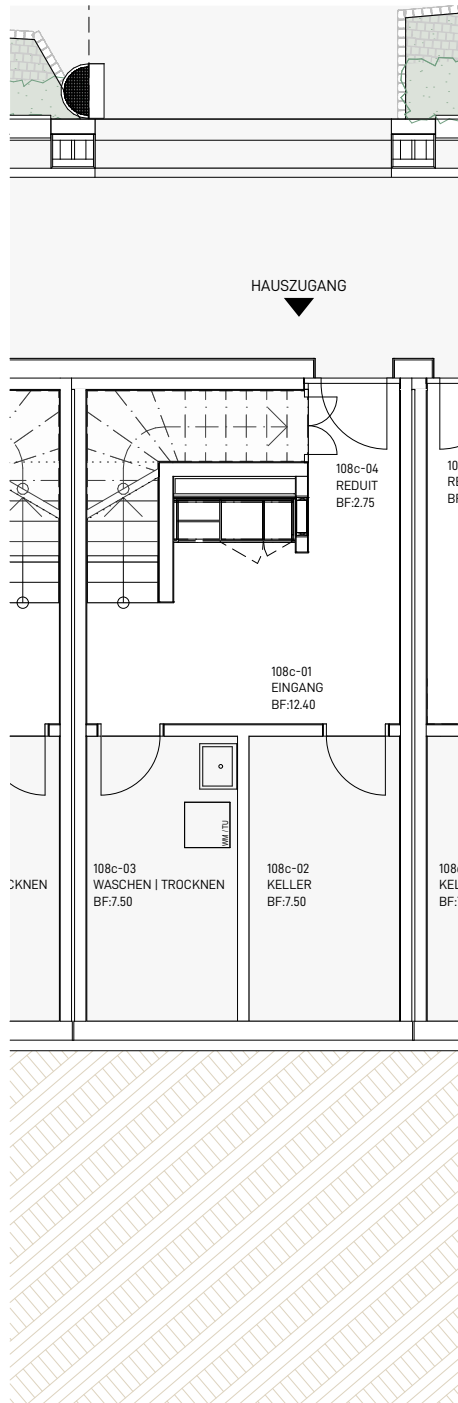


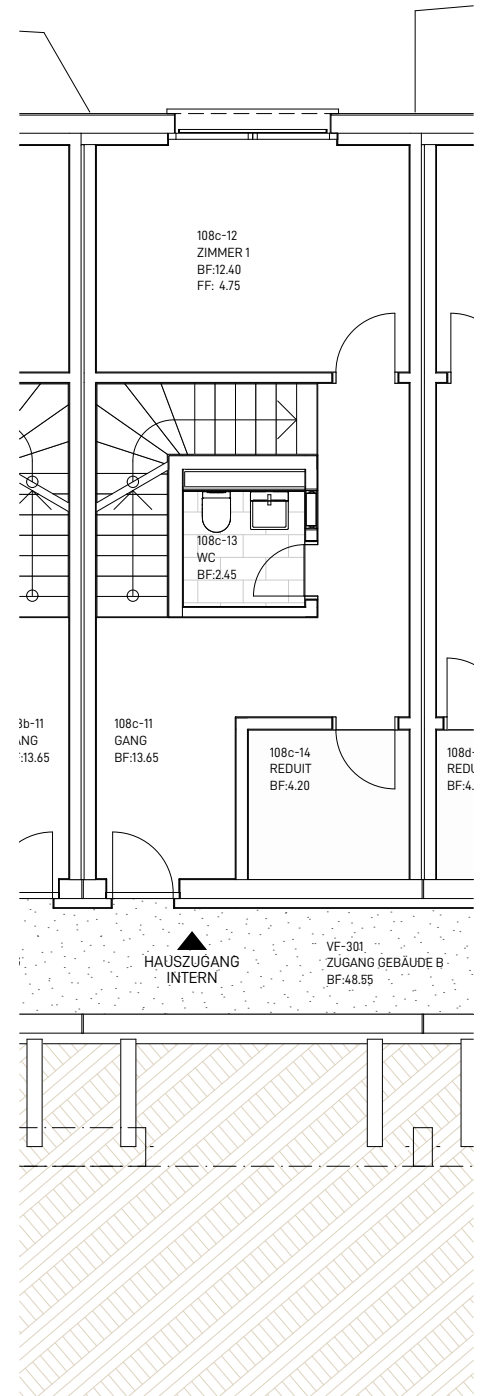
REIHENHAUS | 5½  
ST.GEORGENSTRASSE 108c  
9011 ST.GALLEN

BWF:	188.6 m <sup>2</sup>
REDUIT:	7.0 m <sup>2</sup>
WASCHEN:	7.5 m <sup>2</sup>
KELLER:	7.5 m <sup>2</sup>
BALKON:	2.4 m <sup>2</sup>
SITZPLATZ:	14.9 m <sup>2</sup>
TERRASSE:	12.3 m <sup>2</sup>

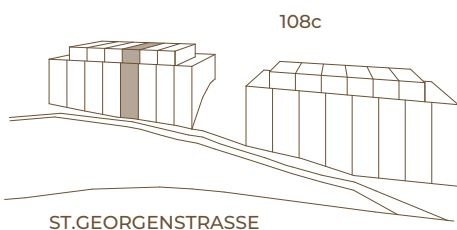
BWF = (FLÄCHE INNERKANT AUSSENWÄNDE INKL. INNENWÄNDE UND STEIGZONEN GERECHNET)



SOCKELGESCHOSS



ERDGESCHOSS

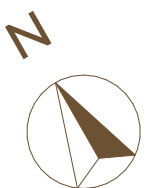


KONTAKTDATEN:

Telamon AG  
9000 St. Gallen

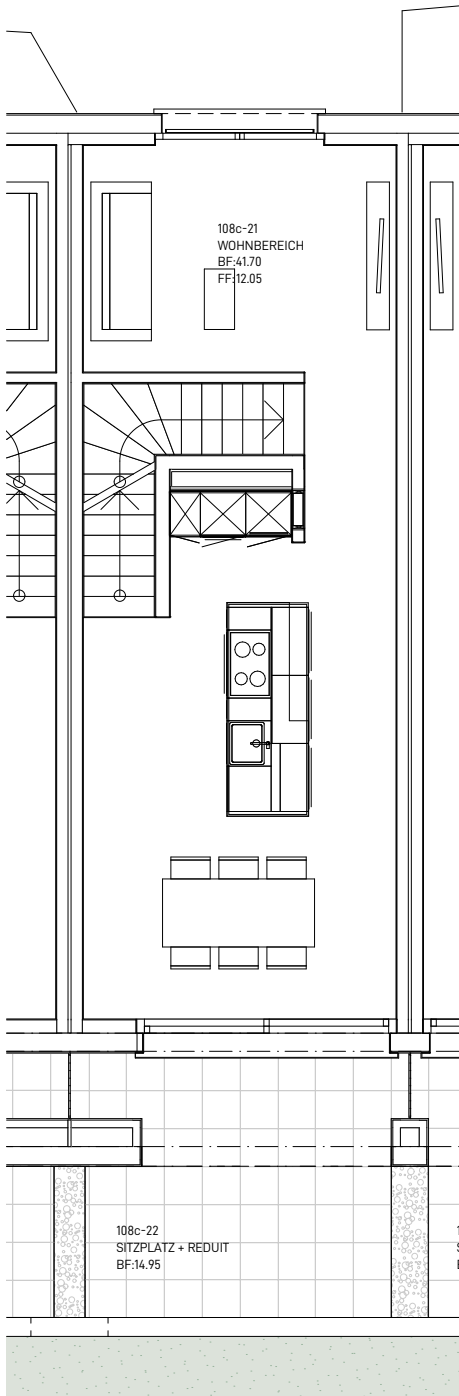
T +41 71 552 25 61  
kontakt@stgeorgen106.ch  
www.stgeorgen106.ch

17.05.2022

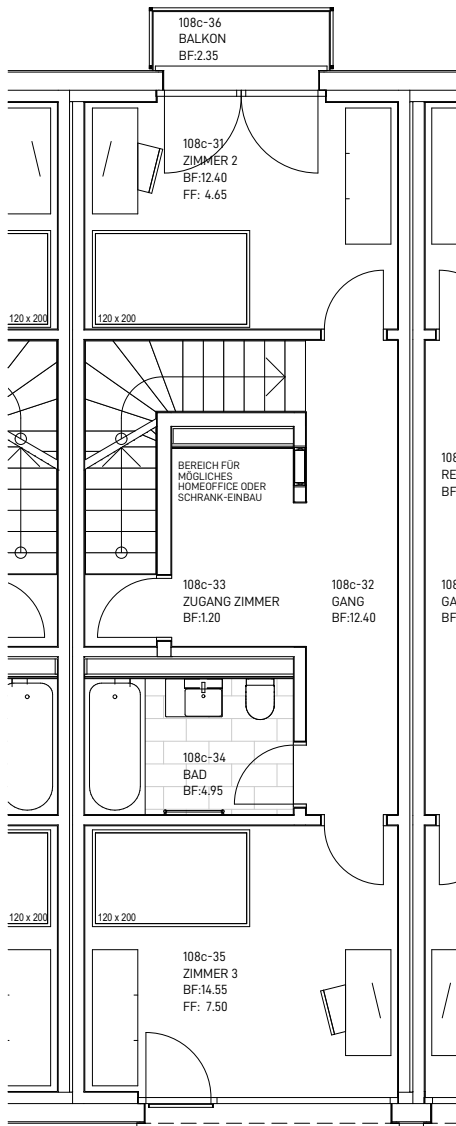


MASSSTAB 1:100 (1cm = 1m)

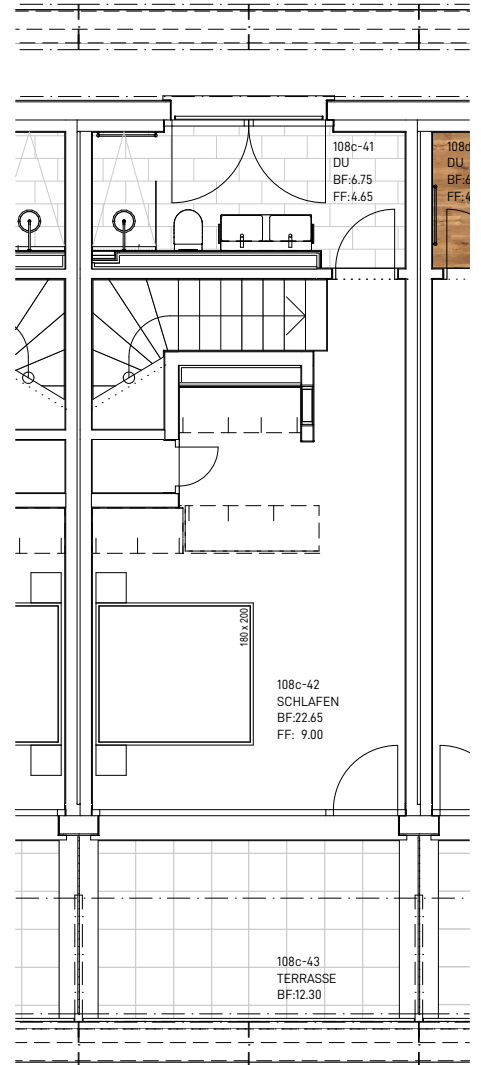
5m



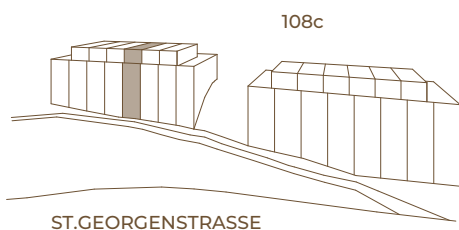
1.OBERGESCHOSS



2.OBERGESCHOSS



ATTIKAGESCHOSS



KONTAKTDATEN:

Telamon AG  
9000 St. Gallen

T +41 71 552 25 61  
kontakt@stgeorgen106.ch  
www.stgeorgen106.ch

17.05.2022



MASSSTAB 1:100 (1cm = 1m) 5m